

# Allergy Products and Services

Make it personal—for each of your allergy patients



STALLERGENES  GREER

2024

(Updated October 2024)

Over a century  
of experience  
serving  
the allergy  
community

# Contents

- Stallergenes Greer Service Team..... 4
- Ordering Information ..... 5
- Skin Testing Devices..... 6
- Extracts..... 9
  - Standardized Extracts ..... 9
  - Pollen ..... 10
  - Fungi and Smuts ..... 15
  - Epithelia, Miscellaneous Inhalants, and Insects ..... 18
  - Ingestant Extracts..... 20
- GREER® Pharmacy ..... 23
- Sterile Diluents ..... 24
- Empty Vials..... 25
  - Dropper Vials ..... 25
  - Sterile Empty Vials ..... 25
- Plastic Colored Caps ..... 25
- Vial Racks..... 25
- Supplies and Ancillary Products ..... 26
  - Safety Syringes..... 26
  - Syringes and Syringe Trays ..... 26
  - Ancillary Products ..... 26
- Terms of Sale ..... 28

# Customize treatment for your patients with support from allergy immunotherapy experts

The Stallergenes Greer Service Team can be reached in person, by phone, or online, to answer your questions about our allergy immunotherapy services and products.

## The Stallergenes Greer Service Team



### Territory Business Manager

A Territory Business Manager will work directly with you to help you find the right option for each of your individual patients



### Customer Care Specialist

Knowledgeable and friendly Customer Care Specialists can guide you through our ordering process and help you navigate our wealth of allergy immunotherapy resources to find what is needed



### Medical Affairs Team

Members of our Medical Affairs Team can provide medical, technical, and scientific information for you and your practice





## ORDERING INFORMATION

To set up an account or place an order with Stallergenes Greer, please contact a Customer Care Specialist at **800.378.3906**

### Ordering

For quality service, specify account number, item number, product name, vial size and dilution, aqueous or glycerinated formulation, and skin prick test or multiple dose vial as shown in the catalog.

Physician license must be on file. Proper identification will be required from institutions.

### Minimum Order

A minimum order of \$25.00 is required. Please combine orders to achieve minimum.

### Shipping

All extracts are shipped overnight for next-day delivery. Unless otherwise specified by customer, all other products ship via UPS 3 Day Select® or Ground. Shipments with ice packs are available upon customer request, with an additional charge.

### Terms

FOB Lenoir, NC. Shipping and insurance charges are prepaid and added to the invoice as applicable. All prices are in US dollars and are subject to change without notice. We accept payment via MasterCard®, Visa®, Discover Card®, and American Express®.

Stallergenes Greer offers a secure way to make payments online at your convenience. There is no charge and signing up is easy.

For more information about this self-pay feature, or to make a payment, please contact **ar@stallergenesgreer.com**.

### Returns

Allergenic extracts and sterile products cannot be returned unless due to a Stallergenes Greer error. Ancillary supplies must be returned in unopened, undamaged cases. Credit is not issued for duplications resulting from customer errors in ordering.

Please contact a Customer Care Specialist at 800.378.3906 for prior approval for all product returns. Any shipping error must be reported within 7 days of receipt of the order. A Return Materials Authorization number must accompany all product returns to Stallergenes Greer within 10 days of the return notification.

### Warranty

We warrant only that solutions in unopened and undamaged vials are sterile and correctly labeled. Once shipment is made, we have no control over storage conditions, methods of usage, or dosage administered.

### Telephone and Fax Orders

To order by telephone, call our Customer Care Specialists:

**800.378.3906**

To order by fax, dial: **800.419.7302** or **828.759.7440**

For customers outside the United States, call: **+1-640-206-9043**

To email, write to:

**uscustomecare@stallergenesgreer.com**

Our Customer Care Specialists are available Monday through Thursday, 8 AM to 6 PM, and Friday, 8 AM to 5 PM Eastern Standard Time.

SKIN TESTING DEVICES

Skintestor OMNI™ System

The Skintestor OMNI System enables quick and efficient allergen testing with its self-loading, multiple-site skin testing applicator and additional testing components. When the wells of the Skintestor OMNI tray are filled with 0.250 mL of extract, an average of 1,031 tests can be performed from one 5 mL glycerinated extract vial.<sup>1</sup> The versatile design of the Skintestor OMNI allows for simple use, whether for skin testing on a patient's arm or back.

Skintestor OMNI™

One pack contains 10 sterile Skintestor OMNI devices. There are 10 packs in a box for a total of 100 devices per box.

Item #	Description
OM203C	10 packs per box; 100 devices per box



Skintestor OMNI™ Trays

The Skintestor OMNI System includes the Skintestor OMNI self-loading, multiple-site, skin testing device for use in either 20- or 40-well labeled trays. Three 20-well trays fit into a carrier tray to create a 60-well option. The Skintestor OMNI device fits securely over its wells to maintain the extract integrity and shields the extract from evaporation. Upon request, customized, laminated, color labels are available for all trays at no additional cost.

Item #	Description
OMT1	Skintestor OMNI Tray (1 sterile 20-well tray)
OM303C	Skintestor OMNI Tray Pouch (5 individually wrapped sterile 20-well trays)
OM503	Skintestor OMNI Carrier Tray (holds 3 sterile 20-well trays)
OM403C	Skintestor OMNI Tray (1 sterile 40-well tray)



40-Well Skintestor OMNI™ Evaluation Package

Item #	Description
OM-40	1 Skintestor OMNI Pack
	1 Skintestor OMNI 40-Well Tray
	1 Skin Reaction Guide, Disposable Paper
	Sample Skintestor OMNI Skin Testing Sheet
	Usage Guide for Skintestor OMNI

60-Well Skintestor OMNI™ Evaluation Package

Item #	Description
OM-EV	1 Skintestor OMNI Pack
	3 Skintestor OMNI 20-Well Trays
	1 Skintestor OMNI Carrier Tray
	1 Skin Reaction Guide, Disposable Paper
	Sample Skintestor OMNI Skin Testing Sheet
	Usage Guide for Skintestor OMNI



Skintestor OMNI™ is manufactured by QTI Corporation and distributed by Stallergenes Greer.

## The GREER® Pick® System

Designed to be easy to fill while maintaining extract integrity, GREER Pick, a self-loading, single-site disposable skin testing system, can average 1,800 tests from one 5 mL vial when the GREER Pick Well is filled with 0.125 mL of glycerinated extract.<sup>2</sup>

### GREER® Pick®

Packaged in 50 sterile pouches each containing 42 picks; 2,100 picks per case.

Item #	Description
GP-1C	2,100 picks per case

### GREER® Pick® Well™

Packaged in sterile pouches each containing 24 wells.

Item #	Description
GW-2	24 wells per pouch



### GREER® Pick® Tray™

The clear GREER Pick Tray is designed to make extract levels easy to see, and the closed-well system is designed to maintain extract integrity and provide spill-free transporting. Each stackable tray can be labeled for easy identification. The GREER Pick Tray is available as a 60-well or 40-well tray. Upon request, customized, laminated, color labels are available for all trays at no additional cost.

Item #	Description
GY-5	Holds 60 wells per tray
GY-40	Holds 40 wells per tray (lid included)

### GREER® Pick® Tray™ Lid

The tabbed lid helps pop the top effortlessly and provides spill-free transporting.

Item #	Description
GY-LD	60-well tray lid

## 40-Well GREER® Pick® Evaluation Package

Item #	Description
GP-10	1 40-Well GREER Pick Tray (bottom component)  1 40-Well GREER Pick Tray Lid (lid component)  Labels (1 blank set of 40)  GREER Pick, 420 picks (10 pouches)  GREER Pick Well, 48 wells (2 pouches)  1 Skin Reaction Guide, Disposable Paper  Sample GREER Pick Skin Testing Sheet  Usage Guide for GREER Pick

Limit 3 packages per customer.

## 60-Well GREER® Pick® Evaluation Package

Item #	Description
GP-11	1 60-Well GREER Pick Tray  GREER Pick, 630 picks (15 pouches)  GREER Pick Well, 72 wells (3 pouches)  1 Skin Reaction Guide, Disposable Paper  Sample GREER Pick Skin Testing Sheet  Usage Guide for GREER Pick

Limit 1 package per customer.



For more information on GREER® Pick®, go to **STAGRAllergy.com/testing**.

1. GREER. Data on file. DS043010: Comparisons of uptake of 50% glycerosaline by Skintestor OMNI devices using wells loaded with 0.250 mL and 0.500 mL fills at ambient and refrigerator temperatures. April 2010.  
2. GREER. Data on file. Evaluation of Allergenic Extract Consumption for the GREER® Pick® and GREER® Pick® Well™ Skin Test Device Components. June 10, 2004.

Review protocols for using GREER® Pick® and Skintestor OMNI™ so you can be confident in your test results

Stallergenes Greer offers



Review Sessions

Led by an allergy immunotherapy professional



Instructional Videos

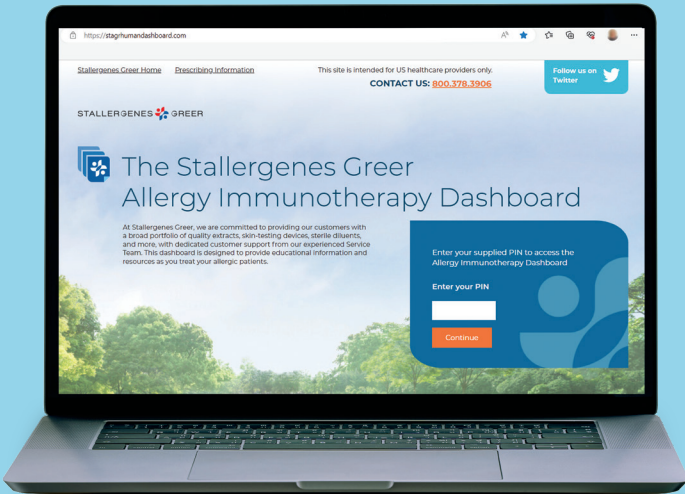
Designed to help review proper technique using Skintestor OMNI™ or GREER® Pick®



If you'd like to **schedule a Skin Testing Review Session**, talk to a Stallergenes Greer Customer Care Specialist at **800.378.3906**.



Stallergenes Greer Allergy Immunotherapy (AIT) Dashboard



Our AIT Online Dashboard includes the Skin Testing Instructional Videos and many more resources!

Talk to your Territory Business Manager or Customer Care Specialist about how to get access to the AIT Dashboard for helpful information as you test and treat your allergic patients.

[www.STAGRHumanDashboard.com](http://www.STAGRHumanDashboard.com)

# STANDARDIZED EXTRACTS

Standardized Cat Hair			
Item #	Product Name	TESTING	TREATMENT
		SPT 5 mL	Glycerin
TE3	Cat Hair <i>Felis catus</i>		

Standardized Mites			
Item #	Product Name	TESTING	TREATMENT
		SPT 5 mL	Glycerin
B64ALL	<i>Dermatophagoides farinae</i>		
B70ALL	<i>Dermatophagoides pteronyssinus</i>		

Standardized Mite Mix			
Mite mix combines equal volumes of <i>D. farinae</i> and <i>D. pteronyssinus</i> . The 10,000 AU/mL product is labeled 5,000 AU/mL for each species.			
Item #	Product Name	TESTING	TREATMENT
		SPT 5 mL	Glycerin
BO3	Mite Mix Equal parts: B64ALL <i>Dermatophagoides farinae</i> , B70ALL <i>Dermatophagoides pteronyssinus</i>		

Standardized Grass Pollen			
Item #	Product Name	TESTING	TREATMENT
		SPT 5 mL	Glycerin
T2ALL	Bermuda Grass <i>Cynodon dactylon</i>		
T16	Kentucky Blue/June <i>Poa pratensis</i>		
T14	Meadow Fescue <i>Festuca elatior</i>		
T20	Orchard <i>Dactylis glomerata</i>		
T22	Redtop <i>Agrostis alba</i>		
T24	Ryegrass, Perennial <i>Lolium perenne</i>		
T27	Sweet Vernal <i>Anthoxanthum odoratum</i>		
T28	Timothy <i>Phleum pratense</i>		

Mixes Containing Standardized Grass Pollen			
Item #	Product Name	TESTING	TREATMENT
		SPT 5 mL	Glycerin
TP27	7 Grass Mix Equal parts: T16 Kentucky Blue/June; T14 Meadow Fescue; T20 Orchard; T24 Ryegrass, Perennial; T22 Redtop; T27 Sweet Vernal; T28 Timothy		
TP24	K-O-R-T Grass Mix Equal parts: T16 Kentucky Blue/June; T20 Orchard; T22 Redtop; T28 Timothy		
TP25	K-O-R-T and Sweet Vernal Mix Equal parts: T16 Kentucky Blue/June; T20 Orchard; T22 Redtop; T28 Timothy; T27 Sweet Vernal		
TP23	K-O-T Grass Mix Equal parts: T16 Kentucky Blue/June; T20 Orchard; T28 Timothy		
TP20	Timothy/Orchard Grass Mix Equal parts: T28 Timothy; T20 Orchard Grass		
TP29	T-O-S Grass Mix Equal parts: T28 Timothy; T20 Orchard; T27 Sweet Vernal		

Standardized Weed Pollen			
Item #	Product Name	TESTING	TREATMENT
		SPT 5 mL	Glycerin
56	Ragweed, Short <i>Ambrosia artemisiifolia</i>		

Mixes Containing Standardized Weed Pollen			
Item #	Product Name	TESTING	TREATMENT
		SPT 5 mL	Glycerin
P3	National Weed Mix Equal parts: 33 Cocklebur; 55 Ragweed, Giant (Tall); 43 Lamb's Quarters; 52 Pigweed, Rough Redroot; 56 Ragweed, Short		
P1	Ragweed Mix Equal parts: 55 Ragweed, Giant (Tall); 56 Ragweed, Short		

- Item is manufactured by Allermed Laboratories, LLC under Allermed Laboratories, LLC US License 467 and distributed by Stallergenes Greer
- Standardized or contains a standardized item
- SPT = Skin Prick Test

All standardized products are available in 50% glycerin only.



POLLEN

Trees and Shrubs

Item #	Product Name	TESTING	TREATMENT	
		SPT 5 mL	Glycerin	Aqueous
172	Acacia <i>Acacia dealbata</i>	●	●	●
69	Alder, Hazel <i>Alnus serrulata</i>	●	●	●
217	Alder, Red <i>Alnus rubra</i>	●	●	●
438	Alder, White <i>Alnus rhombifolia</i>	●	●	●
204	Ash, Arizona (Velvet) <i>Fraxinus velutina</i>	●	●	●
72	Ash, Green <i>Fraxinus pennsylvanica</i>	●	●	●
73	Ash, Oregon <i>Fraxinus latifolia</i>	●	●	
74	Ash, White <i>Fraxinus americana</i>	●	●	●
75	Aspen <i>Populus tremuloides</i>	●	●	●
76	Beech, American <i>Fagus grandifolia</i>	●	●	
81	Birch, Black/Sweet <i>Betula lenta</i>	●	●	●
79	Birch, River <i>Betula nigra</i>	●	●	●
80	Birch, White <i>Betula populifolia</i>	●	●	●
82	Box Elder <i>Acer negundo</i>	●	●	
83	Cedar, Mountain <i>Juniperus ashei</i>	●	●	
84	Cedar, Red <i>Juniperus virginiana</i>	●	●	●
242	Cedar, Salt (Tamarisk) <i>Tamarix gallica</i>	●	●	
87	Cottonwood, Eastern <i>Populus deltoides</i>	●	●	
88	Cottonwood, Western <i>Populus deltoides ssp. monilifera</i>	●	●	

Trees and Shrubs *continued*

Item #	Product Name	TESTING	TREATMENT	
		SPT 5 mL	Glycerin	Aqueous
244	Cypress, Arizona <i>Callitropsis arizonica</i>	●	●	●
193	Cypress, Bald <i>Taxodium distichum</i>	●	●	●
92	Elm, American <i>Ulmus americana</i>	●	●	●
179	Elm, Cedar <i>Ulmus crassifolia</i>	●	●	●
93	Elm, Siberian <i>Ulmus pumila</i>	●	●	●
196	Eucalyptus, Bluegum <i>Eucalyptus globulus</i>	●	●	●
98	Hackberry <i>Celtis occidentalis</i>	●	●	●
99	Hazelnut, American <i>Corylus americana</i>	●	●	●
103	Hickory, Shagbark <i>Carya ovata</i>	●	●	●
104	Hickory, White <i>Carya tomentosa</i>	●	●	
243	Juniper, Oneseed <i>Juniperus monosperma</i>	●	●	●
280	Juniper, Rocky Mountain <i>Juniperus scopulorum</i>	●	●	●
233	Juniper, Utah <i>Juniperus osteosperma</i>	●	●	●
254	Juniper, Western <i>Juniperus occidentalis</i>	●	●	●
169	Locust Blossom, Black <i>Robinia pseudoacacia</i>	●	●	●
257	Mango Blossom <i>Mangifera indica</i>	●	●	●
108	Maple, Red <i>Acer rubrum</i>	●	●	●
109	Maple, Silver/Soft <i>Acer saccharinum</i>	●	●	●
110	Maple, Sugar/Hard <i>Acer saccharum</i>	●	●	

Trees and Shrubs *continued*

Item #	Product Name	TESTING	TREATMENT	
		SPT 5 mL	Glycerin	Aqueous
221	Melaleuca <i>Melaleuca quinquenervia</i>	●	●	●
111	Mesquite, Velvet <i>Prosopis velutina</i>	●	●	
112	Mulberry, Red <i>Morus rubra</i>	●	●	
194	Mulberry, White <i>Morus alba</i>	●	●	●
256	Oak, Arizona (Gambel) <i>Quercus gambelii</i>	●	●	●
195	Oak, California Live <i>Quercus agrifolia</i>	●	●	●
119	Oak, Post <i>Quercus stellata</i>	●	●	●
120	Oak, Red <i>Quercus rubra</i>	●	●	●
116	Oak, Virginia Live <i>Quercus virginiana</i>	●	●	●
122	Oak, White <i>Quercus alba</i>	●	●	●
123	Olive <i>Olea europaea</i>	●	●	●
247	Orange Pollen <i>Citrus X sinensis</i>	●	●	●
127	Pecan <i>Carya illinoensis</i>	●	●	●
132	Pine, Loblolly <i>Pinus taeda</i>	●	●	●
478	Pine, Ponderosa <i>Pinus ponderosa</i>	●	●	●
130	Pine, White Eastern <i>Pinus strobus</i>	●	●	●
480	Pine, White Western <i>Pinus monticola</i>	●	●	●
131	Pine, Yellow <i>Pinus echinata</i>	●	●	●
177	Poplar, Lombardy's <i>Populus nigra</i>	●	●	●

Trees and Shrubs *continued*

Item #	Product Name	TESTING	TREATMENT	
		SPT 5 mL	Glycerin	Aqueous
134	Poplar, White <i>Populus alba</i>	●	●	●
135	Privet <i>Ligustrum vulgare</i>	●	●	●
216	Queen Palm <i>Syagrus romanzoffiana</i>	●	●	●
137	Sweetgum <i>Liquidambar styraciflua</i>	●	●	●
138	Sycamore, American <i>Platanus occidentalis</i>	●	●	●
140	Walnut, Black <i>Juglans nigra</i>	●	●	●
222	Walnut, California Black <i>Juglans californica</i>	●	●	●
210	Walnut, English <i>Juglans regia</i>	●	●	●
173	Wax Myrtle <i>Morella cerifera</i>	●	●	●
142	Willow, Black <i>Salix nigra</i>	●	●	

● SPT 5 mL testing vials offered in 50% glycerin only  
● Item is offered in one or more vial sizes/dilutions unless noted  
SPT = Skin Prick Test



POLLEN *CONTINUED*

Tree Mixes

Item #	Product Name	TESTING	TREATMENT	
		SPT 5 mL	Glycerin	Aqueous
P35	2 Maple Mix Equal parts: 108 Maple, Red; 110 Maple, Sugar/Hard	●	●	
P53	3 Maple Mix Equal parts: 108 Maple, Red; 109 Maple, Silver/Soft; 110 Maple, Sugar/Hard	●	●	
PO714	11 Tree Mix Equal parts: 76 Beech, American; 138 Sycamore, American; 92 Elm, American; 140 Walnut, Black; 142 Willow, Black; 87 Cottonwood, Eastern; 120 Oak, Red; 79 Birch, River; 103 Hickory, Shagbark; 110 Maple, Sugar/Hard; 74 Ash, White	●	●	●
P30	Ash Mix Equal parts: 72 Ash, Green; 74 Ash, White	●	●	
P31	Birch Mix Equal parts: 81 Birch, Black/Sweet; 79 Birch, River; 80 Birch, White	●	●	●
P49	Central/Eastern 4 Tree Mix Equal parts: 92 Elm, American; 82 Box Elder; 127 Pecan; 116 Oak, Virginia Live	●	●	
P46	Eastern 6 Tree Mix Equal parts: 76 Beech, American; 87 Cottonwood, Eastern; 120 Oak, Red; 79 Birch, River; 103 Hickory, Shagbark; 74 Ash, White	●	●	●
P47	Eastern 7 Tree Mix Equal parts: 92 Elm, American; 76 Beech, American; 87 Cottonwood, Eastern; 120 Oak, Red; 79 Birch, River; 103 Hickory, Shagbark; 74 Ash, White	●	●	●
P48	Eastern 8 Tree Mix Equal parts: 92 Elm, American; 76 Beech, American; 87 Cottonwood, Eastern; 120 Oak, Red; 79 Birch, River; 103 Hickory, Shagbark; 74 Ash, White; 110 Maple, Sugar/Hard	●	●	
P50	Eastern 10 Tree Mix Equal parts: 138 Sycamore, American; 92 Elm, American; 76 Beech, American; 87 Cottonwood, Eastern; 120 Oak, Red; 79 Birch, River; 103 Hickory, Shagbark; 74 Ash, White; 110 Maple, Sugar/Hard; 137 Sweetgum	●	●	
P38	Eastern Oak Mix Equal parts: 114 Oak, Black; 120 Oak, Red; 122 Oak, White	●	●	●
P32	Elm Mix Equal parts: 92 Elm, American; 93 Elm, Siberian	●	●	

Tree Mixes *continued*

Item #	Product Name	TESTING	TREATMENT	
		SPT 5 mL	Glycerin	Aqueous
P34	Hickory-Pecan Mix Equal parts: 127 Pecan; 103 Hickory, Shagbark	●	●	●
PO800	Juniper Mix Equal parts: 243 Juniper, Oneseed; 280 Juniper, Rocky Mountain	●	●	●
P36	Maple-Box Elder Mix Equal parts: 82 Box Elder; 110 Maple, Sugar/Hard	●	●	
258	Peppertree Mix Equal parts: American Peppertree ( <i>Schinus molle</i> ); Brazilian Peppertree ( <i>Schinus terebinthifolia</i> )	●	●	●
P37	Pine Mix Equal parts: 132 Pine, Loblolly; 130 Pine, Eastern White; 131 Pine, Yellow	●	●	●
P56	Western 3 Tree Mix Equal parts: 93 Elm, Siberian; 228 Sycamore, California (Western); 123 Olive	●	●	
P41	Western Oak Mix Equal parts: 284 Oak, California Black; 195 Oak, California Live; 285 Oak, Western White	●	●	●
P51	Western Walnut Mix Equal parts: 222 Walnut, California Black; 210 Walnut, English	●	●	●

Flowers

Item #	Product Name	TESTING	TREATMENT	
		SPT 5 mL	Glycerin	Aqueous
158	Daisy <i>Leucanthemum vulgare</i>	●	●	
159	Dandelion <i>Taraxacum officinale</i>	●	●	●
164	Sunflower <i>Helianthus annuus</i>	●	●	●

Cultivated Plants

Item #	Product Name	TESTING	TREATMENT	
		SPT 5 mL	Glycerin	Aqueous
145	Alfalfa <i>Medicago sativa</i>	●	●	●
174	Rape (Mustard) <i>Brassica napus</i>	●	●	
146	Red Clover <i>Trifolium pratense</i>	●	●	●
63	Sugar Beet <i>Beta vulgaris</i>	●	●	●



Weeds

Item #	Product Name	TESTING	TREATMENT	
		SPT 5 mL	Glycerin	Aqueous
202	Allscale <i>Atriplex polycarpa</i>	●	●	●
32	Amaranth, Green <i>Amaranthus hybridus</i>	●	●	●
42	Burningbush (Kochia) <i>Kochia scoparia ssp. scoparia</i>	●	●	●
213	Burrobrush <i>Ambrosia salsola</i>	●	●	●
33	Cocklebur <i>Xanthium strumarium</i>	●	●	
35	Dock, Yellow (Curly) <i>Rumex crispus</i>	●	●	●
184	Dogfennel <i>Eupatorium capillifolium</i>	●	●	●
37	Goldenrod <i>Solidago canadensis</i>	●	●	●
43	Lamb's Quarters <i>Chenopodium album</i>	●	●	
240	Lenscale (Quailbrush) <i>Atriplex lentiformis</i>	●	●	
44	Marsh Elder, Burweed (Giant Poverty) <i>Cyclachaena xanthiifolia</i>	●	●	
45	Marshelder, True (Rough) <i>Iva annua</i>	●	●	
47	Mugwort, Common <i>Artemisia vulgaris</i>	●	●	
36	Nettle <i>Urtica dioica</i>	●	●	●
49	Palmer's Amaranth <i>Amaranthus palmeri</i>	●	●	●
52	Pigweed, Rough Redroot <i>Amaranthus retroflexus</i>	●	●	
53	Pigweed, Spiny <i>Amaranthus spinosus</i>	●	●	
54	Plantain, English <i>Plantago lanceolata</i>	●	●	●
238	Rabbit Bush <i>Ambrosia deltoidea</i>	●	●	●
185	Ragweed, False <i>Ambrosia acanthicarpa</i>	●	●	●

● SPT 5 mL testing vials offered in 50% glycerin only  
● Item is offered in one or more vial sizes/dilutions unless noted  
SPT = Skin Prick Test

POLLEN CONTINUED

Weeds continued

Item #	Product Name	TESTING	TREATMENT	
		SPT 5 mL	Glycerin	Aqueous
55	Ragweed, Giant (Tall) <i>Ambrosia trifida</i>	●	●	●
56	Ragweed, Short <i>Ambrosia artemisiifolia</i>	●	●	
58	Ragweed, Western <i>Ambrosia psilostachya</i>	●	●	●
59	Russian Thistle <i>Salsola kali</i>	●	●	
61	Sagebrush, Common <i>Artemisia tridentata</i>	●	●	●
48	Sage, Prairie <i>Artemisia ludoviciana</i>	●	●	●
199	Saltbush, Annual <i>Atriplex wrightii</i>	●	●	●
64	Sorrel, Sheep (Red) <i>Rumex acetosella</i>	●	●	●
40	Waterhemp, Tall <i>Amaranthus tuberculatus</i>	●	●	
206	Wingscale <i>Atriplex canescens</i>	●	●	●



Weed Mixes

Item #	Product Name	TESTING	TREATMENT	
		SPT 5 mL	Glycerin	Aqueous
P54	3 Weed Mix Equal parts: 33 Cocklebur; 43 Lamb's Quarters; 52 Pigweed, Rough Redroot	●	●	●
225	Baccharis Mix Equal parts: Eastern Baccharis ( <i>Baccharis halimifolia</i> ); Desertbroom ( <i>Baccharis sarothroides</i> )	●	●	●
P14	Central/Western Weed Mix Equal parts: 42 Burningbush ( <i>Kochia</i> ); 43 Lamb's Quarters; 59 Russian Thistle	●	●	
P15	Common Weed Mix Equal parts: 33 Cocklebur; 54 Plantain, English; 43 Lamb's Quarters; 52 Pigweed, Rough Redroot; 59 Russian Thistle	●	●	
PO216	Dock-Sorrel Mix Equal parts: 64 Sorrel, Sheep (Red); 35 Dock, Yellow (Curly)	●	●	●
P3	National Weed Mix Equal parts: 33 Cocklebur; 55 Ragweed, Giant (Tall); 43 Lamb's Quarters; 52 Pigweed, Rough Redroot; 56 Ragweed, Short	●	●	
P5	Pigweed Mix Equal parts: 32 Amaranth, Green; 49 Palmer's Amaranth; 52 Pigweed, Rough Redroot	●	●	●
P6	Plantain-Sorrel Mix Equal parts: 54 Plantain, English; 64 Sorrel, Sheep (Red)	●	●	●
P1	Ragweed Mix Equal parts: 55 Ragweed, Giant (Tall); 56 Ragweed, Short	●	●	
P8	Sage Mix Equal parts: 61 Sagebrush, Common; 48 Sage, Prairie	●	●	
P9	Scale/Atriplex Mix Equal parts: 202 Allscale; 240 Lenscale (Quailbrush); 206 Wingscale	●	●	●
P2	Western Ragweed Mix Equal parts: 185 Ragweed, False; 58 Ragweed, Western	●	●	●



Grasses

Item #	Product Name	TESTING	TREATMENT	
		SPT 5 mL	Glycerin	Aqueous
231	Bahia Grass <i>Paspalum notatum</i>	●	●	●
T2ALL	Bermuda Grass <i>Cynodon dactylon</i>	●	●	
8	Brome, Smooth <i>Bromus inermis</i>	●	●	●
9	Canary Grass, Reed <i>Phalaris arundinacea</i>	●	●	●
149	Corn, Cultivated <i>Zea mays</i>	●	●	●
15	Johnson Grass <i>Sorghum halepense</i>	●	●	
T16	Kentucky Blue/June <i>Poa pratensis</i>	●	●	
T14	Meadow Fescue <i>Festuca elatior</i>	●	●	
21	Oats, Cultivated <i>Avena sativa</i>	●	●	●
T20	Orchard <i>Dactylis glomerata</i>	●	●	
11	Quack (Couch) Grass <i>Elymus repens</i>	●	●	
T22	Redtop <i>Agrostis alba</i>	●	●	
23	Rye, Cultivated <i>Secale cereale</i>	●	●	
25	Ryegrass, Italian <i>Lolium multiflorum</i>	●	●	●
T24	Ryegrass, Perennial <i>Lolium perenne</i>	●	●	
T27	Sweet Vernal <i>Anthoxanthum odoratum</i>	●	●	
T28	Timothy <i>Phleum pratense</i>	●	●	
29	Velvetgrass <i>Holcus lanatus</i>	●	●	●
31	Wheat, Cultivated <i>Triticum aestivum</i>	●	●	●

Grass Mixes

Item #	Product Name	TESTING	TREATMENT	
		SPT 5 mL	Glycerin	Aqueous
TP27	7 Grass Mix Equal parts: T16 Kentucky Blue/June; T14 Meadow Fescue; T20 Orchard; T24 Ryegrass, Perennial; T22 Redtop; T27 Sweet Vernal; T28 Timothy	●	●	
TP24	K-O-R-T Grass Mix Equal parts: T16 Kentucky Blue/June; T20 Orchard; T22 Redtop; T28 Timothy	●	●	
TP25	K-O-R-T and Sweet Vernal Mix Equal parts: T16 Kentucky Blue/June; T20 Orchard; T22 Redtop; T28 Timothy; T27 Sweet Vernal	●	●	
TP23	K-O-T Grass Mix Equal parts: T16 Kentucky Blue/June; T20 Orchard; T28 Timothy	●	●	
TP20	Timothy/Orchard Grass Mix Equal parts: T28 Timothy; T20 Orchard	●	●	
TP29	T-O-S Grass Mix Equal parts: T28 Timothy; T20 Orchard; T27 Sweet Vernal	●	●	

FUNGI AND SMUTS

Fungi

Item #	Product Name	TESTING	TREATMENT	
		SPT 5 mL	Glycerin	Aqueous
M1	<i>Alternaria alternata</i>	●	●	
M4	<i>Aspergillus amstelodami</i>	●	●	
M2	<i>Aspergillus flavus</i>	●	●	
M3	<i>Aspergillus fumigatus</i>	●	●	
M35	<i>Aspergillus nidulans</i>	●	●	
M5	<i>Aspergillus niger</i>	●	●	
M21	<i>Aureobasidium pullulans</i>	●	●	

- Item is manufactured by Allermed Laboratories, LLC under Allermed Laboratories, LLC US License 467 and distributed by Stallergenes Greer
- Standardized or contains a standardized item
- SPT 5 mL testing vials offered in 50% glycerin only
- Item is offered in one or more vial sizes/dilutions unless noted
- SPT = Skin Prick Test

FUNGI AND SMUTS *CONTINUED*

Fungi *continued*

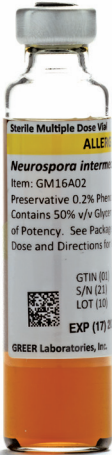
Item #	Product Name	TESTING	TREATMENT	
		SPT 5 mL	Glycerin	Aqueous
M12	<i>Bipolaris sorokiniana</i>	●	●	
M30	<i>Botrytis cinerea</i>	●	●	
M15	<i>Candida albicans*</i>	●	●	
M8	<i>Chaetomium globosum</i>	●	●	
M9	<i>Cladosporium herbarum</i>	●	●	
M13	<i>Cladosporium sphaerospermum</i>	●	●	
M45	<i>Curvularia spicifera</i>	●	●	
M29	<i>Epicoccum nigrum</i>	●	●	
M10	<i>Epidermophyton floccosum</i>	●	●	
M48	<i>Fusarium solani</i>	●	●	
M63	<i>Geotrichum candidum</i>	●	●	
M11	<i>Gibberella fujikuroi</i> <i>Fusarium moniliforme</i>	●	●	
M41	<i>Gliocladium viride</i>	●	●	
M40	<i>Helminthosporium solani</i>	●	●	
M14	<i>Microsporum canis</i>	●	●	
M52	<i>Mucor circinelloides f. circinelloides</i>	●	●	
M68	<i>Mucor circinelloides f. lusitanicus</i>	●	●	

\* Also available in ID 5 mL vial.



Fungi *continued*

Item #	Product Name	TESTING	TREATMENT	
		SPT 5 mL	Glycerin	Aqueous
M27	<i>Mucor plumbeus</i>	●	●	
M16	<i>Neurospora intermedia</i>	●	●	
M34	<i>Paecilomyces variotii</i>	●	●	
M19	<i>Penicillium chrysogenum var. chrysogenum</i>	●	●	
M28	<i>Penicillium digitatum</i>	●	●	
M39	<i>Phoma betae</i>	●	●	
M22	<i>Rhizopus arrhizus</i>	●	●	
M23	<i>Rhizopus stolonifer</i>	●	●	
M49	<i>Rhodotorula mucilaginosa</i>	●	●	
M67	<i>Saccharomyces cerevisiae</i>	●	●	
M6	<i>Sarocladium strictum</i> <i>Acremonium strictum</i>	●	●	
M33	<i>Stemphylium solani</i>	●	●	
M24	<i>Trichoderma harzianum</i>	●	●	
M26	<i>Trichophyton mentagrophytes</i>	●	●	
M50	<i>Trichophyton rubrum</i>	●	●	
M7	<i>Trichothecium roseum</i>	●	●	



Fungi Mixes

Item #	Product Name	TESTING	TREATMENT	
		SPT 5 mL	Glycerin	Aqueous
MO64	AHH Mix Equal parts: M1 <i>Alternaria alternata</i> ; M12 <i>Bipolaris sorokiniana</i> ; M13 <i>Cladosporium sphaerospermum</i>	●	●	
MO126	<i>Alternaria</i> /Hormodendrum Mix Equal parts: M1 <i>Alternaria alternata</i> ; M13 <i>Cladosporium sphaerospermum</i>	●	●	
MO4	<i>Aspergillus</i> Mix Equal parts: M4 <i>Aspergillus amstelodami</i> ; M2 <i>Aspergillus flavus</i> ; M3 <i>Aspergillus fumigatus</i> ; M35 <i>Aspergillus nidulans</i> ; M5 <i>Aspergillus niger</i>	●	●	
MO464	Dematiaceae Mix Equal parts: M1 <i>Alternaria alternata</i> ; M21 <i>Aureobasidium pullulans</i> ; M12 <i>Bipolaris sorokiniana</i> ; M9 <i>Cladosporium herbarum</i> ; M45 <i>Curvularia spicifera</i> ; M40 <i>Helminthosporium solani</i>	●	●	
MO9	<i>Fusarium</i> Mix Equal parts: M11 <i>Gibberella fujikuroi</i> ; M48 <i>Fusarium solani</i>	●	●	
MO1	Mold Mix #1 Equal parts: M1 <i>Alternaria alternata</i> ; M5 <i>Aspergillus niger</i> ; M12 <i>Bipolaris sorokiniana</i> ; M13 <i>Cladosporium sphaerospermum</i> ; M19 <i>Penicillium chrysogenum</i> var. <i>chrysogenum</i>	●	●	
MO2	Mold Mix #2 Equal parts: M21 <i>Aureobasidium pullulans</i> ; M45 <i>Curvularia spicifera</i> ; M11 <i>Gibberella fujikuroi</i> ; M27 <i>Mucor plumbeus</i> ; M23 <i>Rhizopus stolonifer</i>	●	●	
MO3	Mold Mix #3 Equal parts: M1 <i>Alternaria alternata</i> ; M5 <i>Aspergillus niger</i> ; M13 <i>Cladosporium sphaerospermum</i> ; M19 <i>Penicillium chrysogenum</i> var. <i>chrysogenum</i>	●	●	
MO10	Monilia Mix Equal parts: M15 <i>Candida albicans</i> ; M16 <i>Neurospora intermedia</i>	●	●	
MO11	<i>Mucor</i> Mix Equal parts: M68 <i>Mucor circinelloides</i> f. <i>lusitanicus</i> ; M27 <i>Mucor plumbeus</i>	●	●	

Fungi Mixes continued

Item #	Product Name	TESTING	TREATMENT	
		SPT 5 mL	Glycerin	Aqueous
MO8	New Stock Fungi Mix Equal parts: M6 <i>Sarocladium strictum</i> ; M1 <i>Alternaria alternata</i> ; M5 <i>Aspergillus niger</i> ; M21 <i>Aureobasidium pullulans</i> ; M12 <i>Bipolaris sorokiniana</i> ; M30 <i>Botrytis cinerea</i> ; M15 <i>Candida albicans</i> ; M8 <i>Chaetomium globosum</i> ; M13 <i>Cladosporium sphaerospermum</i> ; M29 <i>Epicoccum nigrum</i> ; M11 <i>Gibberella fujikuroi</i> ; M27 <i>Mucor plumbeus</i> ; M19 <i>Penicillium chrysogenum</i> var. <i>chysogenum</i> ; M39 <i>Phoma betae</i> ; M23 <i>Rhizopus stolonifer</i> ; M26 <i>Trichophyton mentagrophytes</i>	●	●	
MO5	<i>Penicillium</i> Mix Equal parts: M17 <i>Penicillium camembertii</i> ; M18 <i>Penicillium chrysogenum</i> ; M28 <i>Penicillium digitatum</i> ; M19 <i>Penicillium chrysogenum</i> var. <i>chrysogenum</i> ; M42 <i>Penicillium roquefortii</i>	●	●	
MO6	Phycomycetes Mix Equal parts: M68 <i>Mucor circinelloides</i> f. <i>lusitanicus</i> ; M23 <i>Rhizopus stolonifer</i>	●	●	
MO12	<i>Rhizopus</i> Mix Equal parts: M22 <i>Rhizopus arrhizus</i> ; M23 <i>Rhizopus stolonifer</i>	●	●	

Smut Mixes All smut mixes are available in 50% glycerin only.

Item #	Product Name	TESTING	TREATMENT	
		SPT 5 mL	Glycerin	Aqueous
SO2	Grain Smut Mix Equal parts: S3 Corn Smut; S1 Loose Smut of Barley; S6 Loose Smut of Wheat; S5 Oat Smut	●	●	
SO1	Grass Smut Mix Equal parts: S2 Bermuda Grass Smut; S4 Loose Kernel Smut	●	●	

- SPT 5 mL testing vials offered in 50% glycerin only
- Item is offered in one or more vial sizes/dilutions unless noted
- SPT = Skin Prick Test



EPITHELIA, MISCELLANEOUS INHALANTS, AND INSECTS

Epithelia

Item #	Product Name	TESTING	TREATMENT	
		SPT 5 mL	Glycerin	Aqueous
TE3	Cat Hair, Standardized <i>Felis catus</i>	●	●	
E4	Cattle Epithelia <i>Bos taurus</i>	●	●	●
E7	Dog Epithelia <i>Canis lupus familiaris</i>	●	●	●
E50	Gerbil Epithelia <i>Meriones unguiculatus</i>	●	●	●
E11	Goat Epithelia <i>Capra hircus</i>	●	●	●
E14	Guinea Pig Epithelia <i>Cavia porcellus</i>	●	●	●
E44	Hamster Epithelia <i>Mesocricetus auratus</i>	●	●	●
E15	Hog Epithelia <i>Sus scrofa</i>	●	●	●
E17	Horse Epithelia <i>Equus caballus</i>	●	●	●
E20	Mouse Epithelia <i>Mus musculus</i>	●	●	●
E24	Rabbit Epithelia <i>Oryctolagus cuniculus</i>	●	●	●
E25	Rat Epithelia <i>Rattus norvegicus</i>	●	●	●



Feathers and Feather Mix

Item #	Product Name	TESTING	TREATMENT	
		SPT 5 mL	Glycerin	Aqueous
E22	Parakeet Feathers <i>Melopsittacus undulatus</i>	●	●	
EO1	Feather Mix Equal parts: E5 Chicken Feathers; E8 Duck Feathers; E12 Goose Feathers	●	●	●



Miscellaneous Inhalants

Item #	Product Name	TESTING	TREATMENT	
		SPT 5 mL	Glycerin	Aqueous
H21	Cotton Linters <i>Gossypium hirsutum</i>	●	●	●
H1	Cottonseed <i>Gossypium hirsutum</i> (For diagnostic use only)	●	●	
H2	Flax <i>Linum usitatissimum</i> (For diagnostic use only)	●	●	●
H15	Gum Arabic <i>Acacia senegal</i>	●	●	●
H4	Kapok <i>Ceiba pentandra</i>	●	●	●
H8	Leaf Tobacco, Cultivated <i>Nicotiana tabacum</i>	●	●	●
H5	Orris Root <i>Iris germanica</i>	●	●	●
H6	Pyrethrum <i>Chrysanthemum cinerariifolium</i>	●	●	●
H7	Silk Worm Cocoon <i>Bombyx mori</i>	●	●	●

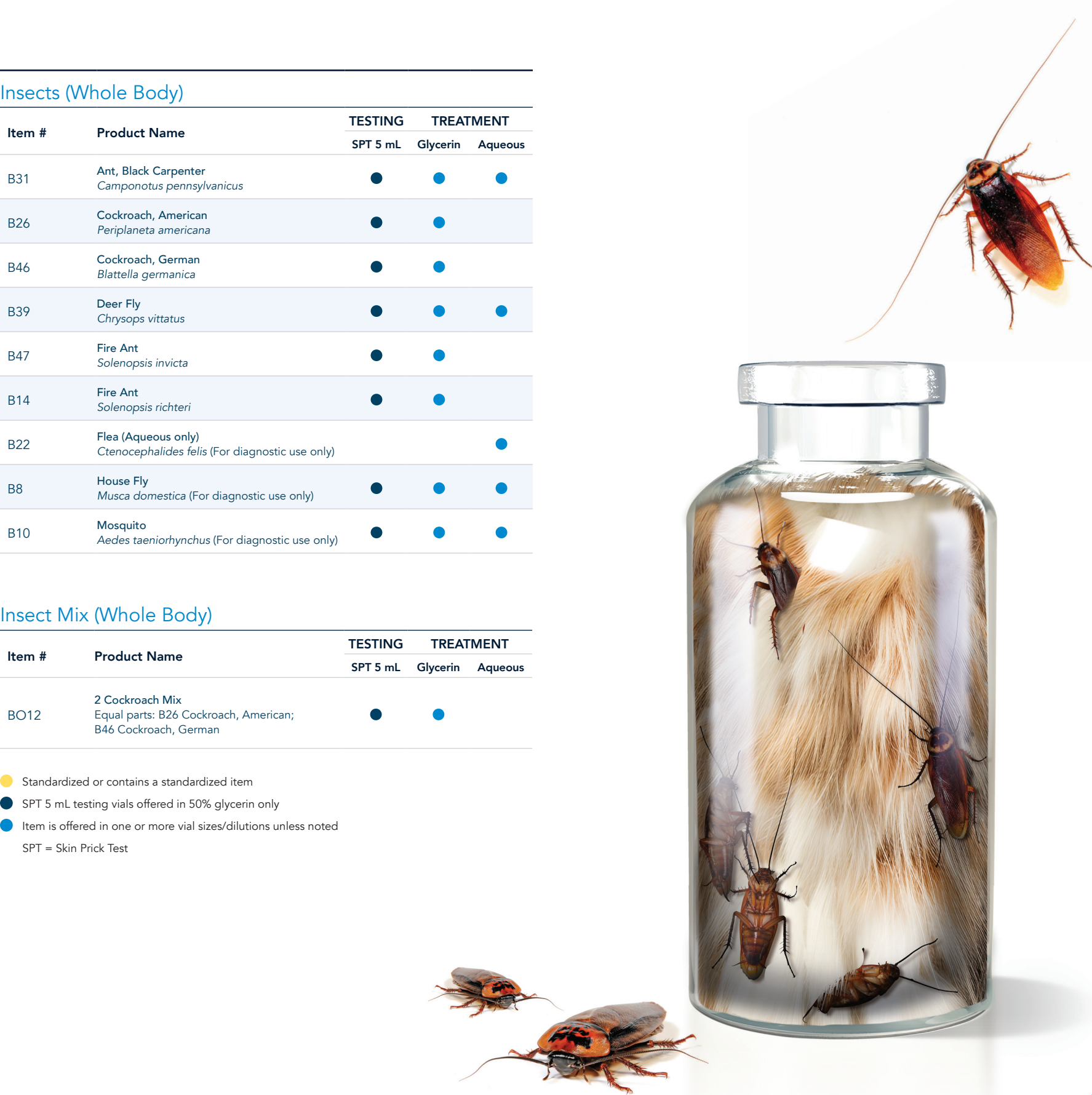
Insects (Whole Body)

Item #	Product Name	TESTING	TREATMENT	
		SPT 5 mL	Glycerin	Aqueous
B31	Ant, Black Carpenter <i>Camponotus pennsylvanicus</i>	●	●	●
B26	Cockroach, American <i>Periplaneta americana</i>	●	●	
B46	Cockroach, German <i>Blattella germanica</i>	●	●	
B39	Deer Fly <i>Chrysops vittatus</i>	●	●	●
B47	Fire Ant <i>Solenopsis invicta</i>	●	●	
B14	Fire Ant <i>Solenopsis richteri</i>	●	●	
B22	Flea (Aqueous only) <i>Ctenocephalides felis</i> (For diagnostic use only)			●
B8	House Fly <i>Musca domestica</i> (For diagnostic use only)	●	●	●
B10	Mosquito <i>Aedes taeniorhynchus</i> (For diagnostic use only)	●	●	●

Insect Mix (Whole Body)

Item #	Product Name	TESTING	TREATMENT	
		SPT 5 mL	Glycerin	Aqueous
BO12	2 Cockroach Mix Equal parts: B26 Cockroach, American; B46 Cockroach, German	●	●	

- Standardized or contains a standardized item
  - SPT 5 mL testing vials offered in 50% glycerin only
  - Item is offered in one or more vial sizes/dilutions unless noted
- SPT = Skin Prick Test





INGESTANT EXTRACTS

All ingestant products are available in 50% glycerin only.

Plant Foods

Item #	Product Name	SPT 5 mL	Bulk Extract Glycerin
F48	Apple <i>Malus pumila</i>	●	●
F49	Apricot <i>Prunus armeniaca</i>	●	●
F55	Banana <i>Musa acuminata</i>	●	●
F56	Barley, Whole Grain <i>Hordeum vulgare</i> (For diagnostic use only)	●	●
F59	Bean, Lima <i>Phaseolus lunatus</i>	●	●
F295	Bean, Navy <i>Phaseolus vulgaris</i>	●	●
F63	Bean, String Green <i>Phaseolus vulgaris</i>	●	●
F70	Blueberry, Velvetleaf <i>Vaccinium myrtilloides</i>	●	●
F73	Broccoli <i>Brassica oleracea</i> var. <i>italica</i>	●	●
F75	Buckwheat <i>Fagopyrum esculentum</i>	●	●
F76	Cabbage <i>Brassica oleracea</i> var. <i>capitata</i>	●	●
F79	Cantaloupe <i>Cucumis melo</i>	●	●
F82	Carrot <i>Daucus carota</i>	●	●
F87	Cauliflower <i>Brassica oleracea</i> var. <i>botrytis</i>	●	●
F88	Celery <i>Apium graveolens</i> var. <i>dulce</i>	●	●
F90	Cherry, Sweet <i>Prunus avium</i>	●	●
F93	Cacao Bean <i>Theobroma cacao</i>	●	●
F95	Cinnamon <i>Cinnamomum verum</i>	●	●
F98	Coconut <i>Cocos nucifera</i>	●	●

Plant Foods *continued*

Item #	Product Name	SPT 5 mL	Bulk Extract Glycerin
F99	Coffee <i>Coffea arabica</i> (For diagnostic use only)	●	●
F102	Corn <i>Zea mays</i>	●	●
F108	Cranberry <i>Vaccinium macrocarpon</i>	●	●
F109	Cucumber <i>Cucumis sativus</i>	●	●
F121	Garlic <i>Allium sativum</i>	●	●
F122	Ginger <i>Zingiber officinale</i>	●	●
F125	Grape, White Seedless <i>Vitis vinifera</i>	●	●
F128	Grapefruit <i>Citrus X paradisi</i>	●	●
F132	Hops <i>Humulus lupulus</i>	●	●
F139	Lemon <i>Citrus X limon</i>	●	●
F142	Lettuce <i>Lactuca sativa</i>	●	●
F148	Malt <i>Hordeum vulgare</i>	●	●
F150	Mushroom <i>Agaricus campestris</i>	●	●
F297	Mustard Seed <i>Sinapis alba</i>	●	●
F153	Nutmeg <i>Myristica fragrans</i>	●	●
F154	Oat <i>Avena sativa</i> (For diagnostic use only)	●	●
F156	Olive, Green <i>Olea europaea</i>	●	●
F158	Onion <i>Allium cepa</i>	●	●
F159	Orange <i>Citrus X sinensis</i>	●	●

Plant Foods *continued*

Item #	Product Name	SPT 5 mL	Bulk Extract Glycerin
F169	Pea, Green or English <i>Pisum sativum</i>	●	●
F170	Peach <i>Prunus persica</i>	●	●
F172	Pear <i>Pyrus communis</i>	●	●
F175	Pepper, Black <i>Piper nigrum</i>	●	●
F177	Pepper, Green <i>Capsicum annuum</i>	●	●
F181	Pineapple <i>Ananas comosus</i> (For diagnostic use only)	●	●
F190	Potato, Sweet <i>Ipomoea batatas</i>	●	●
F191	Potato, White <i>Solanum tuberosum</i>	●	●
F198	Raspberry, Red <i>Rubus idaeus</i>	●	●
F200	Rice <i>Oryza sativa</i>	●	●
F204	Rye <i>Secale cereale</i> (For diagnostic use only)	●	●
F208	Sesame Seed <i>Sesamum indicum</i>	●	●
F209	Soybean <i>Glycine max</i>	●	●
F211	Spinach <i>Spinacia oleracea</i> (For diagnostic use only)	●	●
F212	Squash, Yellow Summer <i>Cucurbita pepo</i> var. <i>ovifera</i>	●	●
F216	Strawberry <i>Fragaria X ananassa</i>	●	●
F225	Tomato <i>Solanum lycopersicum</i> var. <i>lycopersicum</i>	●	●
F228	Vanilla <i>Vanilla planifolia</i>	●	●
F232	Watermelon <i>Citrullus lanatus</i>	●	●
F235	Wheat, Whole <i>Triticum aestivum</i> (For diagnostic use only)	●	●

Animal Foods

Item #	Product Name	SPT 5 mL	Bulk Extract Glycerin
F241	Beef <i>Bos taurus</i>	●	●
F251	Lamb <i>Ovis aries</i>	●	●
F258	Pork <i>Sus scrofa</i>	●	●

Poultry Products

Item #	Product Name	SPT 5 mL	Bulk Extract Glycerin
F265	Chicken Meat <i>Gallus gallus</i>	●	●
F272	Egg, White, Chicken <i>Gallus gallus</i>	●	●
F271	Egg, Whole, Chicken <i>Gallus gallus</i>	●	●
F273	Egg Yolk, Chicken <i>Gallus gallus</i>	●	●
F346	Turkey Meat <i>Meleagris gallopavo</i>	●	●

Dairy Products

Item #	Product Name	SPT 5 mL	Bulk Extract Glycerin
F293	Milk, Cow <i>Bos taurus</i>	●	●

- SPT 5 mL testing vials offered in 50% glycerin only
  - Item is offered in one or more vial sizes/dilutions unless noted
- SPT = Skin Prick Test



INGESTANT EXTRACTS *CONTINUED*

Fish and Shellfish

Item #	Product Name	SPT 5 mL	Bulk Extract Glycerin
F4	Bass, Black <i>Centropristis striata</i>	●	●
F8	Catfish, Channel <i>Ictalurus punctatus</i>	●	●
F10	Clam, Northern Quahog <i>Mercenaria mercenaria</i>	●	●
F11	Cod, Atlantic <i>Gadus morhua</i>	●	●
F12	Crab, Blue <i>Callinectes sapidus</i>	●	●
F16	Flounder, Southern <i>Paralichthys lethostigma</i>	●	●
F20	Lobster, American <i>Homarus americanus</i>	●	●
F21	Mackerel, King/Atlantic <i>Scomber scombrus</i>	●	●
F23	Oyster, Atlantic/Eastern <i>Crassostrea virginica</i>	●	●
F24	Perch, Ocean <i>Sebastes alutus</i>	●	●
F30	Salmon, Atlantic <i>Salmo salar</i>	●	●
F32	Scallops, Sea <i>Placopecten magellanicus</i>	●	●
F34	Shrimp, Brown <i>Farfantepenaeus aztecus</i>	●	●
F40	Trout, Rainbow <i>Oncorhynchus mykiss</i>	●	●
F41	Tuna, Yellowfin <i>Thunnus albacares</i>	●	●



Specific products have been designated as premium allergens due to low utilization, decreased availability of source materials, increased costs associated with the collection/extraction process, and/or market conditions. These items carry a surcharge. **Please consult your Customer Care Specialist for more information at 800.378.3906.**

Food Mixes

Item #	Product Name	SPT 5 mL	Bulk Extract Glycerin
FO1	Fish Mix Equal parts: F11 Cod, Atlantic; F16 Flounder, Southern; F18 Halibut; F21 Mackerel, King/Atlantic; F41 Tuna, Yellowfin	●	●
FO2	Shellfish Mix Equal parts: F10 Clam, Northern Quahog; F12 Crab, Blue; F23 Oyster, Atlantic/Eastern; F32 Scallops, Sea; F34 Shrimp, Brown	●	●

Nuts

Item #	Product Name	SPT 5 mL	Bulk Extract Glycerin
F46	Almond <i>Prunus dulcis</i>	●	●
F72	Brazil Nut <i>Bertholletia excelsa</i>	●	●
F84	Cashew Nut <i>Anacardium occidentale</i>	●	●
F98	Coconut <i>Cocos nucifera</i>	●	●
F120	Hazelnut (Filbert) <i>Corylus americana</i>	●	●
F171	Peanut <i>Arachis hypogaea</i>	●	●
F173	Pecan <i>Carya illinoensis</i>	●	●
F229	Walnut, Black <i>Juglans nigra</i>	●	●
F230	Walnut, English <i>Juglans regia</i>	●	●

- SPT 5 mL testing vials offered in 50% glycerin only
  - Item is offered in one or more vial sizes/dilutions unless noted
- SPT = Skin Prick Test

## Offering named-patient AIT formulation services through GREER® Pharmacy

Using our expert pharmacy staff and quality extracts, GREER® Pharmacy specializes in preparing all types of named-patient allergy immunotherapy formulations, from the simple to the complex.

### GREER® Pharmacy offers



#### More than 40 years of experience

We have simplified the process of providing allergy immunotherapy. With customized, quality AIT formulations, you can focus on patient care.



#### A wide selection of extracts

Choose your desired extracts for patient-specific prescription formulations.



#### Expert pharmacy staff

Our staff specializes in preparing allergy immunotherapy formulations.



#### Customized formulations, dosages, and strengths

Our products are made specifically for each patient according to your prescription instructions.



#### Quick turnaround time

Need a prescription in a hurry? Ask about our STAT Rx option. There is a 1-week average delivery from the time the prescription has been ordered.



For more information about GREER® Pharmacy services or to speak to a Customer Care Specialist, call **800.378.3906** or email **[uscustomercare@stallergenesgreer.com](mailto:uscustomercare@stallergenesgreer.com)**.

# STERILE DILUENTS

## Normal Saline

Also called phenolated saline. Water for injection (WFI) with 0.9% NaCl.

Item #	Fill/mL	Vial Size	Vial Seal Color	Qty/Pack
SD2507001	2.0 mL	5-20	Silver	25
SD2507028	4.0 mL	5-20	Silver	25
SD2507024	4.0 mL	5-20	Red	25
SD2507027	4.0 mL	5-20	Blue	25
SD2507025	4.0 mL	5-20	Green	25
SD2507136	4.0 mL	5-20	Yellow	25
SD2507039	4.0 mL	5-20	Purple	25
SD2507030	4.5 mL	5-20	Silver	25
SD2507040	4.5 mL	5-20	Red	25
SD2507060	4.5 mL	5-20	Blue	25
SD2507050	4.5 mL	5-20	Green	25
SD2507137	4.5 mL	5-20	Yellow	25
SD2507131	8.0 mL	10-20	Silver	25
SD2507090	9.0 mL	10-20	Silver	25
SD2507100	9.0 mL	10-20	Red	25
SD2507120	9.0 mL	10-20	Blue	25
SD2507110	9.0 mL	10-20	Green	25
SD2507138	9.0 mL	10-20	Yellow	25
SD1007140	30 mL	30-20	Silver	10
SD07143	100 mL	100-20	Silver	12

**Diluents come in a variety of fills.** The 30 mL and 100 mL vials are overfilled to ensure that their labeled amount can be withdrawn. GREER® Sterile Diluents™ (Normal Saline and HSA) contain 0.4% phenol, which acts as a preservative by inhibiting microbial growth.<sup>1</sup> The second number after the vial size is the outer diameter of the top of the vial in millimeters.

## 50% Glycerin Saline\*

To enhance the stability of extracts, 50% glycerin saline is often used. It also helps protect the structure of allergenic proteins that may be particularly susceptible to degradation in solution and may help protect against the effects of prolonged exposure to room temperature.<sup>2</sup>

Item #	Fill/mL	Vial Size	Vial Seal Color	Qty/Pack
SA5007212	100 mL	100-20	Silver	12

\* Manufactured for Stallergenes Greer.

## HSA (Human Serum Albumin) Saline†

Normal saline with 0.03% human serum albumin added to enhance the stability of very dilute extracts. HSA helps maintain allergen potency by preventing adsorption of proteins to vial walls.<sup>1,2</sup>

Item #	Fill/mL	Vial Size	Vial Seal Color	Qty/Pack
SH2507260	1.8 mL	5-20	Silver	25
SH2507291	4.0 mL	5-20	Silver	25
SH2507292	4.0 mL	5-20	Red	25
SH2507294	4.0 mL	5-20	Blue	25
SH2507293	4.0 mL	5-20	Green	25
SH2507362	4.0 mL	5-20	Yellow	25
SH2507300	4.5 mL	5-20	Silver	25
SH2507310	4.5 mL	5-20	Red	25
SH2507330	4.5 mL	5-20	Blue	25
SH2507320	4.5 mL	5-20	Green	25
SH2507283	4.5 mL	5-20	Yellow	25
SH2507345	8.0 mL	10-20	Silver	25
SH2507360	9.0 mL	10-20	Silver	25
SH2507361	9.0 mL	10-20	Red	25
SH2507359	9.0 mL	10-20	Blue	25
SH2507363	9.0 mL	10-20	Green	25
SH2507364	9.0 mL	10-20	Yellow	25
SH1007370	30 mL	30-20	Silver	10
SH07380	100 mL	100-20	Silver	12

## † HSA Limit of Liability

In the event of a recall of a lot of human serum albumin (HSA) contained in this product by the manufacturer for any reason, customers’ exclusive remedy and total liability of Stallergenes Greer is limited to the replacement of any unused vials within the carton, and any unopened cartons of HSA diluent affected by the recall.



DROPPER VIALS

Item #	Description	Qty/Pack
5NSEVA	Nonsterile 5 mL vial with dropper cap, screw thread type 1 glass	25
10NSEV	Nonsterile 10 mL vial with dropper cap, screw thread type 1 glass	25

STERILE EMPTY VIALS

Offered by Stallergenes Greer in a wide range of convenient sizes.

Item #	Vial Size	Vial Seal Color	Qty/Pack
SE2508020	2-13	Silver	25
SE2508040	5-20	Silver	25
SE2508050	5-20	Red	25
SE2508060	5-20	Green	25
SE2508070	5-20	Blue	25
SE2508083	5-20	Purple	25
SE2508084	5-20	Yellow	25
SE2508100	10-20	Silver	25
SE2508110	10-20	Red	25
SE2508120	10-20	Green	25
SE2508130	10-20	Blue	25
SE2508150	10-20	Yellow	25
SE1008150	30-20	Silver	10
SE08155	50-20	Silver	12
SE08160	100-20	Silver	12

PLASTIC COLORED CAPS

20 mm Item #	Cap Color	Qty/Pack
PCYEL20	Yellow	25
PCORG20	Orange	25
PCRED20	Red	25
PCGRN20	Green	25
PCWHT20	White	25
PCPNK20	Pink	25
PCPUR20	Purple	25
PCBLU20	Blue	25



Snap-on, color-coded caps can be used to differentiate strengths of treatment extracts.

VIAL RACKS

GREER® Versa Vial Rack®

This one-color design features four easy-grip handles and tiered wells to hold multiple vial sizes. Racks are stackable with special drains in every well for quick cleanup. Three different base sizes allow for a better fit in most refrigerators.

Item #	Style	Vial Capacity	To Hold	Size
VRB001	Bulk Versa Vial Rack	39	50-20 vials 10-13 vials	9 ½" x 13 ½"
VRT002	Testing Versa Vial Rack	48 plus 2 controls	5 mL skin prick test vials 5-13 vials Labeled negative and positive controls in 2 sizes	8" x 10"
VRLT005	Testing Versa Vial Rack (large)	72 plus 2 controls	5 mL skin prick test vials 5-13 vials Labeled negative and positive controls in 2 sizes	8" x 14.5"
VRP003	Prescription Versa Vial Rack	48	5-20 vials 10-13 vials 10-20 vials	8" x 10"
VRLP004	Prescription Versa Vial Rack (large)	72	5-20 vials 10-13 vials 10-20 vials	8" x 14.5"

1. Cox L, Nelson H, Lockey R, et al. Allergen immunotherapy: a practice parameter third update. *J Allergy Clin Immunol.* 2011;127(Suppl 1):S1-S55.

2. Nelson MR, Peterson MM, Wolverton WO, Mikita CP. Allergen immunotherapy extract treatment set preparation: making a safer and higher quality product for patients. *Curr Allergy Asthma Rep.* 2013;13(4):399-405.

SAFETY SYRINGES

Magellan™ Tuberculin Safety Syringe Trays

Item #	Description
MAS27T	1 cc 27 g x ½” regular bevel, 20 syringes/tray, 40 trays (800/case)



Photo courtesy of Magellan™

Becton-Dickinson

Item #	Description
BD5950	SafetyGlide™ 1 cc 27 g x ½” regular bevel, 25 syringes/tray, 40 trays (1,000/case)

SYRINGES AND SYRINGE TRAYS

GREER® Optimix® Two Extract Mixing Syringe

Item #	Description
GROM-23-2	1 cc 23 g x ½” regular bevel, 25 syringes/tray, 40 trays (1,000/case)

Becton-Dickinson

Cases consist of 25 syringes/tray, 40 trays (1,000/case)

Item #	Description
BD5535	½ cc 27 g x ½” regular bevel
BD5536	½ cc 27 g x ⅜” intradermal bevel
BD5540	1 cc 27 g x ½” regular bevel
BD5541	1 cc 27 g x ⅜” intradermal bevel
BD5542	1 cc 27 g x ⅜” regular bevel

Syringe Trays

Item #	Description
RACHST	Rachman Syringe Tray: composed of sturdy, heavy-gauge ABS plastic that holds 18 syringes per tray. Measures 14 ⅙” L x 9 ¼” W x 1 ¾” D
GRS025	Plastic Syringe Tray Sets: 5 sets/pack, 2-layer tray, holds 25 syringes
GRSS025	Safety Syringe Organizer Tray: 5 sets/pack, 2-layer tray, holds 25 syringes

ANCILLARY PRODUCTS

Styrofoam Containers

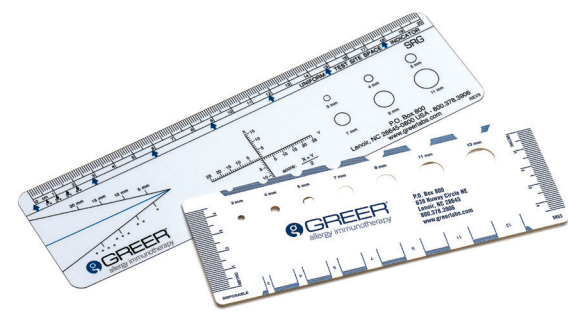
Sturdy, molded Styrofoam conforms to each vial allowing protection against breakage and provides additional insulation when exposed to heat or cold. Lightweight design makes shipping easy and economical.

Item #	Description
STY1C	Holds any of our 5 mL or 10 mL vials or two 2 mL vials (250/case)
STY5C	Holds up to five 5 mL or 10 mL vials with space for instruction sheet (200/case)

Skin Reaction Guides

Skin reaction guides help clinicians accurately measure the wheal and erythema response following percutaneous skin testing. Both plastic reusable and paper disposable skin reaction guides are available.

Item #	Description
SRG	Clear Plastic (1 pack contains 12)
SRG3	Disposable Paper (1 pack contains 100)



### Mailing Containers

Inner compartments (trays) slide into outer cardboard cartons (boxes) for quick packaging. Sturdy material designed to help protect vials from breakage during transportation.

Item #	Vial Size Type	Holds	Qty/Case
5133B	5 mL (13 mm neck)	3 vials	500
5133T	5 mL (13 mm neck)	3 vials	500
5136B	5 mL (13 mm neck)	6 vials	500
5136T	5 mL (13 mm neck)	6 vials	500
5203B	5 mL (20 mm neck)	3 vials	500
5203T	5 mL (20 mm neck)	3 vials	500
5206B	5 mL (20 mm neck)	6 vials	500
5206T	5 mL (20 mm neck)	6 vials	500
10133B	10 mL (13 mm neck)	3 vials	500
10133T	10 mL (13 mm neck)	3 vials	500
10136B	10 mL (13 mm neck)	6 vials	500
10136T	10 mL (13 mm neck)	6 vials	500
5203C-100*	5 and 10 mL (20 mm neck)	3 vials	100
5206C-100*	5 and 10 mL (20 mm neck)	6 vials	100

\* These items include both boxes and trays.  
Note: B in item number indicates boxes.  
Note: T in item number indicates trays.

### Jiffy™ Mailing Bags

Lightweight mailers are padded for added protection of extract vials. These versatile mailers allow for easy shipping of different materials.

Item #	Size	Qty/Case
JB0C	6" x 10"	250
JB1C	7 ¼" x 12"	100
JB2C	8 ½" x 12"	100

### Sharps Collectors

OSHA-approved containers for contaminated waste. Available in multiple sizes: 8.2 quart, 5 gallon, and 6 gallon.

Item #	Description	Qty/Case
BD5490	Sharps Collector, 8.2 quarts	12
BD5491	Sharps Collector, 5 gallons	8
BD5465	Sharps Collector, 6 gallons, funnel top	12

### Stock and Custom-Printed Labels

Pressure-sensitive labels adhere quickly and firmly to vials. Stock labels include space for vial labeling information recommended by allergy immunotherapy practice parameters.<sup>1</sup> For information about custom-printed labels, please contact your Customer Care Specialist.

Item #	Color	Size	Qty/Roll
L-PVLR	Red	1.625" x 1"	1,000
L-PVLB	Blue	1.625" x 1"	1,000
L-PVLG	Green	1.625" x 1"	1,000
L-PVLY	Yellow	1.625" x 1"	1,000
L-PVLBK	Black	1.625" x 1"	1,000

1. Cox L, Nelson H, Lockey R, et al. Allergen immunotherapy: a practice parameter third update. *J Allergy Clin Immunol.* 2011;127(Suppl 1):S1-S55.



## ORDERING INFORMATION

To set up an account or place an order with Stallergenes Greer, please contact a Customer Care Specialist at **800.378.3906**.

## TERMS OF SALE

# To set up an account or place an order with Stallergenes Greer, please contact a Customer Care Specialist at **800.378.3906**

### STALLERGENES GREER - TERMS AND CONDITIONS OF SALE AND SERVICE

**NOTICE:** ALL TRANSACTIONS BETWEEN GREER LABORATORIES, INC., A NORTH CAROLINA CORPORATION D/B/A “**STALLERGENES GREER**” (TOGETHER WITH ITS AFFILIATES, COLLECTIVELY “**SELLER**”) AND BUYER (TOGETHER WITH ITS AFFILIATES, COLLECTIVELY, “**BUYER**”), AND ALL DOCUMENTS PERTAINING TO SUCH TRANSACTIONS, ARE SUBJECT TO AND CONDITIONED UPON THESE TERMS AND CONDITIONS OF SALE AND SERVICE (“**TERMS**”) AND THESE TERMS ARE INCORPORATED BY REFERENCE INTO AND ARE A PART OF ALL TRANSACTIONS BETWEEN SELLER AND BUYER. NO TERM CONTAINED IN ANY BUYER CORRESPONDENCE OR ANY SALES DOCUMENTS ISSUED BY BUYER, OTHER THAN BUYER’S ACCEPTANCE OF THESE TERMS, SHALL BECOME A PART OF THE TRANSACTION BETWEEN THE PARTIES OR BIND.

### Order Process; Acceptance

“**Sales Documents**” include any Other Written Agreement (as defined below), quotation, proposal, statement of work (“**SOW**”), service request, order confirmation, order acceptance, and invoice of Seller issued in writing (including via email or electronically) by an authorized representative of Seller. Buyer’s purchase of Products (defined below) from Seller, and any Services (defined below) will be governed solely by these Terms and any applicable Sales

Documents issued by Seller in connection with such Products and Services (collectively, the “**Contract**”). All sales of products and any other goods sold by Seller (individually, “**Product**” and collectively, the “**Products**”) and any services performed by Seller (“**Services**”) are subject to [final written acceptance] in North Carolina by Seller [through the execution of a mutually executed written agreement between Seller and Buyer relating to the purchase of Products or Services (each, an “**Other Written Agreement**”) and no orders are binding on Seller until so accepted]. Seller’s catalog and any quotations do not constitute an offer to sell Products or Services and are subject to change prior to the execution of an Other Written Agreement. In the event an inconsistency exists between these Terms and an Other Written Agreement, the terms of such Other Written Agreement shall prevail to the extent of such inconsistency. Buyer may order Products by executing an Other Written Agreement with Seller that references the name and number of the Product(s), quantity per Product, requested delivery date, account number, vial size and dilution, aqueous or glycerinated formulation, and skin prick test or multiple dose vial as shown in the catalog. Prior to accepting an Other Written Agreement, Buyer’s Physician license must be on file with Seller and proper identification will be required from institutions. Buyer may request Services by submitting an SOW describing Services and referencing a performance date.

### Shipping and Handling, Price; Payment

All prices for Products and Services will be as stated in writing by Seller in its Sales Documents and, prior to Seller’s written acceptance of an order,

prices are subject to change by Seller at any time without notice. If no price has been stated in the Sales Documents, the price will be as set forth on Seller’s standard price in its catalogs or price lists in effect at the time of delivery, and as increased to account for costs of changes or modifications to the Products or Services for the particular Contract. Seller will arrange shipment consistent with Buyer’s designated delivery date, and at Buyer’s expense for all customs, duties, and fees. Shipping and insurance charges are prepaid and will be added to the invoice in addition to the stated price. In addition to any shipping or insurance charges, Seller reserves the right to charge additional handling, processing, picking, packing, crating, storage, coordination, or similar fees, which shall be stated separately on the Sales Documents. Additionally, Seller shall have no obligation to pass along all or any discounts or rebates it may receive from any handler, shipping carrier, third-party transportation provider, or similar vendor. Unless otherwise requested by Buyer, extracts are shipped overnight for next-day delivery and all other Products ship via UPS 3 Day Select® or Ground. Shipments with ice packs are available upon Buyer’s written request, for an additional charge. In the event that, between the date of the order on the Sales Documents and the date of delivery of the Products, there is an increase in cost to manufacture and/or to deliver the Products for any reason, then, unless expressly stated otherwise in Seller’s Sales Documents, Buyer agrees that Seller may: (i) add the amount of such increase to the price of the Products; or (ii) cancel the Contract without liability. Unless expressly stated otherwise in the Sales Documents, prices for Products shall assume delivery is made FOB, Seller’s facility in Lenoir, North Carolina, excluding standard packing, assembly, disassembly, handling, shipping, transportation, or other in-transit costs.

## Payment Terms; Minimum Order

All invoices and payments will be in US Dollars. Unless expressly stated otherwise in the Sales Documents, payment terms are cash on, or prior to, delivery of Products or prior to the performance of any Services. Buyer shall timely pay all amounts due in full, and without deduction or setoff regardless of any dispute that may arise between Buyer and Seller, net without discount for shipping or other transfer, regardless of any dispute or controversy that may arise. A minimum order of \$25 is required.

## Inspection; Acceptance

Buyer shall inspect all Products and Services immediately upon their delivery or performance, and prior to use or resale. Immediately and no later than seven (7) days after delivery of a Product or completion of a Service, Buyer must give written notice to Seller of any claim Buyer makes based upon any alleged shortage, defect, or discrepancy of Products sold or Services provided, based upon the condition, grade, patent defects in, or quantity of Products or Services, and such notice must indicate the basis of the claim in detail, state the invoice number, invoice date, SOW, and information, such as a serial number, on the Product itself or the Product label or packaging. Buyer's failure to comply within the time specified in this Section 4 constitutes Buyer's irrevocable acceptance of Products delivered or Services performed and will bind Buyer to pay to Seller the full price of such Products and Services.

## Returns

Buyer must contact one of Seller's Customer Care Specialists at 800.378.3906 for prior approval for all Product returns. Any shipping error must be reported within 7 days of receipt of the order. A Return Materials Authorization Number must accompany all product returns to Seller within 10 days of the return notification. Buyer shall pre-pay any other transportation charges for any authorized returns of Products. Buyer specifically acknowledges and agrees that Products custom manufactured for Buyer cannot be returned.

## Insurance

Upon request by Seller from time to time, Buyer will deliver to Seller a current certificate of insurance evidencing product and commercial liability coverage of not less than \$5 million per occurrence.

## Limited Warranty

Subject to the provisions in these Terms and in the Sales Documents: (i) for Products manufactured by Seller, Seller warrants only that at the time of delivery solutions in unopened and undamaged vials are sterile and correctly labeled; (ii) for Products not manufactured by Seller, SELLER MAKES NO WARRANTY AS TO SUCH PRODUCTS, and Seller shall only assign to Buyer, to the extent Seller is authorized by the manufacturer to do so, all manufacturer's warranties as to those Products; and (iii) when Services are performed, unless applicable law, regulation, or professional standards require a different warranty, Services will have been performed in a workmanlike manner (collectively,





## TERMS OF SALE *CONTINUED*

the “**Limited Warranty**”). Unless expressly stated otherwise in the Sales Documents, the Limited Warranty shall expire: (a) one (1) month from the Delivery Date for Products; or (b) for Services, seven (7) days after the completion of such Services (collectively, the “**Warranty Period**”). Buyer must give Seller detailed written notice of any Products or Services which Buyer alleges do not conform to the Limited Warranty, which must be made within seven (7) days after Buyer is aware of the alleged non-conformity and, in any event, within the Warranty Period. For any Products that Seller determines do not conform to the Limited Warranty, Seller’s sole liability and obligation, and Buyer’s sole and exclusive remedy, will be, at Seller’s choice, to replace such non-conforming Product, or to refund the purchase price for such non-conforming Product. For any Services which Seller determines do not conform to the Limited Warranty, unless required otherwise by applicable law, regulation, or professional regulatory body, Seller’s sole liability and obligation, and Buyer’s sole and exclusive remedy, will be, at Seller’s choice, to correct or repeat such Services. EXCEPT FOR THE LIMITED WARRANTY EXPRESSLY PROVIDED IN THIS SECTION 7, SELLER MAKES NO REPRESENTATIONS OR WARRANTIES, STATUTORY OR OTHERWISE, REGARDING OR RELATING TO PRODUCTS, SERVICES, OR ANY CONTRACT, AND SELLER DISCLAIMS ALL REPRESENTATIONS AND WARRANTIES, EXPRESS AND IMPLIED, WRITTEN OR ORAL, WITH RESPECT TO PRODUCTS AND SERVICES, INCLUDING THE IMPLIED WARRANTIES OF MERCHANTABILITY AND FITNESS FOR A PARTICULAR PURPOSE.

### Limitation of Liability

SELLER’S MAXIMUM AGGREGATE LIABILITY UNDER, ARISING OUT OF, OR RELATING TO A CONTRACT, OR PRODUCTS OR SERVICES WILL NOT EXCEED THE AMOUNT BUYER PAID TO SELLER FOR THE PARTICULAR PRODUCTS OR SERVICES AT ISSUE, REGARDLESS OF THE THEORY OF RECOVERY. UNDER NO CIRCUMSTANCES

SHALL SELLER OR ITS AFFILIATES BE LIABLE TO BUYER FOR SPECIAL, INDIRECT, INCIDENTAL, CONSEQUENTIAL, OR PUNITIVE DAMAGES, INCLUDING LOST PROFITS, REGARDLESS OF THE THEORY OF RECOVERY, EVEN IF SELLER HAS BEEN ADVISED OF THE POSSIBILITY OF SUCH DAMAGES. THESE TERMS CONTAIN BUYER’S SOLE AND EXCLUSIVE REMEDIES RELATING TO THESE TERMS, A BREACH OF THESE TERMS, THE SALES DOCUMENTS, OR THE PRODUCTS, OR SERVICES, REGARDLESS OF THE THEORY OF RECOVERY.

### Indemnification

Buyer shall indemnify and defend Seller and its affiliates, and their respective officers, directors, employees, and agents from all claims, losses, expenses (including attorney’s and expert witness fees), causes of action, damage to persons or to property, and liabilities of every kind, arising directly or indirectly from fulfillment of the Agreement, the sale of Products or Services or Buyer’s breach of its representations or covenants hereunder or under any Sales Document.

### Confidentiality; Intellectual Property; No License

Buyer shall keep confidential Seller’s trade secrets and any other proprietary and/or confidential commercial information, including the existence of a relationship with Seller, and shall not disclose any such information to any third party without Seller’s prior written permission. Buyer acknowledges and agrees that all such proprietary and/or confidential information and other property will remain the property of Seller and its affiliates. All intellectual property rights currently existing or arising out of or in connection with the Products or Services shall be the sole and exclusive property of Seller and its affiliates.





### Reputable Seller

Buyer represents to Seller that: (a) neither Buyer nor its employees, affiliates, representatives, or agents have been debarred, suspended, or proposed for debarment by any federal, state, or local agency (“**Ineligible Person**”); and (b) it shall notify Seller immediately if any such person or entity becomes listed as an Ineligible Person. If any such person or entity becomes an Ineligible Person or Seller learns that Buyer’s representations were false, Seller shall have the right to terminate any Contract or business relationship with Buyer, whether covered by the Agreement or otherwise, immediately, in addition to any other remedy available to Seller.

### Assignment

Buyer may not assign or transfer any Contract or any interest therein or monies payable thereunder without the prior written consent of Seller.

### Governing Law; Venue

Each Contract is governed by the laws of the State of North Carolina, without giving effect to its choice of law provisions. Buyer consents to the personal jurisdiction of the North Carolina State Courts and the United States District Court for the Western District of North Carolina, and Seller and Buyer agree that such courts shall constitute the sole and exclusive judicial forum(s) and venue for the resolution of any and all matters, disputes, and controversies arising out of or relating to a Contract, the Products or Services, or these Terms.

### Entire Agreement

Unless mutually agreed upon in writing elsewhere, a Contract, including these Terms, constitutes the sole and exclusive agreement between the parties pertaining to Products, and supersedes all previous and contemporaneous agreements, understandings, proposals, negotiations or discussions, usages of trade, and courses of dealing, whether written or oral, between the parties.

## INDICATIONS

Allergenic extracts are indicated for skin test diagnosis and treatment (immunotherapy) of patients with seasonal and perennial allergies.

## IMPORTANT SAFETY INFORMATION

### WARNING: SEVERE ALLERGIC REACTIONS

- **Allergenic extracts can cause severe life-threatening systemic reactions, including anaphylaxis.**
- Do not administer allergenic extracts to patients with severe, unstable, or uncontrollable asthma.
- Intended for use only by physicians who are experienced in the administration of allergenic extracts.
- Observe patients in the office for at least 30 minutes following treatment. Emergency measures and personnel trained in their use must be available immediately in the event of a life-threatening reaction.
- Immunotherapy may not be suitable for patients with certain underlying medical conditions that may reduce their ability to survive a systemic allergic reaction.
- Allergenic extracts may not be suitable for patients receiving medications such as beta-blockers that may make them unresponsive to epinephrine or inhaled bronchodilators.

Do not inject intravenously. Initial dose should be based on skin test reactivity.

Systemic reactions include generalized skin erythema, urticaria, pruritus, angioedema, rhinitis, wheezing, laryngeal edema, chest tightness and hypotension. Other adverse reactions include local reactions at the injection site (e.g., erythema, itching, swelling, tenderness, and pain). Additional symptoms that are not usually associated with allergy also may occur, such as nausea, emesis, abdominal cramps and diarrhea.

**Please see the Full Prescribing Information, including Boxed WARNINGS, for full safety information, which is available at [www.STAGRAAllergy.com](http://www.STAGRAAllergy.com).**



Please scan this QR code to see full Prescribing Information, including Boxed Warnings.

All products are the property of their respective owners.